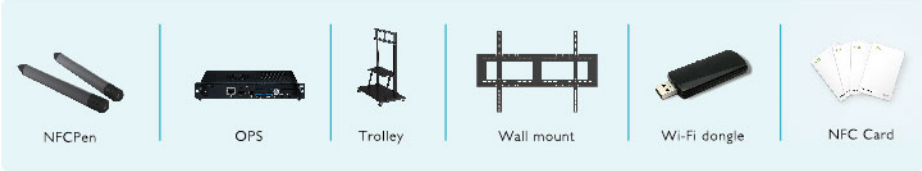


Model			
Panel			
Screen Size	65", 75", 86"	55", 65", 75", 86"	65", 75", 86"
Panel Type	IPS	VA	IPS
Resolution	UHD 4K	UHD 4K	UHD 4K
Brightness (Typical)	350 nits	350 nits	400
Dynamic Contrast Ratio (Typical)	30,000:1	30,000:1	30,000:1
View Angle (Horizontal / Vertical)	178°/178°	178°/178°	178°/178°
Response Time (ms)	8ms	8.5ms	8ms
Panel bit	10 bit	10 bit	10 bit
Light Life (Typical)	50,000 hours	50,000 hours	50,000 hours
Display Orientation	Landscape	Landscape	Landscape
Glass			
Hardness	4mm, 8H	3mm, 8H (55"), 4mm, 8H	3.2mm, 8H
Anti-Glare	AG80	AG75	AG75
Touch			
Touch Technology	Fine IR+	Fine IR	Fine IR
Numbers of Touch	Up to 20 points	Up to 20 points	Up to 20 points
Bonding Technology	Zero Bonding	Zero Bonding	Zero Bonding
Connectivity & Sensor			
Connector	VGA x1, HDMI 2.0 x3, HDMI Out x1, 3.5mm Audio Line in/Mic in x1, 3.5mm Audio Line out x1, SPDIF Audio out x1, USB 2.0 x3, USB 3.0 x2, USB B Touch Port x3, Type C x1, RS232 x1, RJ45 x1, OPS Slot x1	VGA x1, HDMI 2.0 x3, HDMI Out x1, 3.5mm Audio Line in/Mic in x1, 3.5mm Audio Line out x1, SPDIF Audio out x1, USB 2.0 x2, USB 3.0 x3, USB B Touch Port x2, RS232 x1, RJ45 x1, OPS Slot x1	VGA x1, DP x1, HDMI 2.0 x3, HDMI Out x1, 3.5mm Audio Line out x1, PC Audio Input x1, SPDIF Audio out x1, USB 2.0 x4, USB 3.0 x2 (OPS follow), USB B Touch Port x2, RS232 x1, RJ45 x2, OPS Slot x1
Camera	Optional	Optional	Optional
Built-in Microphone	Array Microphone x8	No	No
Built-in speaker	Speakers 16W x2 & Subwoofer 15W x1	Speakers 16W x2	Speakers 15W x2
Sensor	NFC Sensor x1, Motion Sensor (PIR) x3, Air Quality Sensor x1, Light Sensor x1,	Light Sensor	Light Sensor
RAM & ROM			
RAM	4GB	4GB	3GB
Storage	32GB	32GB	32GB
Mechanical			
Weight (Without / With Packing) (kg)	65": 44 kg / 56 kg 75": 61 kg / 78 kg 86": 79 kg / 97.5 kg	55": 29.3 kg / 37.05 kg 65": 41.2 kg / 52.7 kg 75": 54.4 kg / 76.1 kg 86": 70.2 kg / 99.6 kg	65": 39 kg / 53.5 kg 75": 54 kg / 73 kg 86": 69 kg / 90.5 kg
Dimension (WxHxD) (mm)	65": 1505.9 x 951.0 x 121.5 75": 1735.5 x 1085.8 x 130.7 86": 1988.8 x 1229.8 x 138.4	55": 1268.1 x 814.5 x 115.6 65": 1488.7 x 938.9 x 115.6 75": 1709.4 x 1062.0 x 115.8 86": 1957.1 x 1201.8 x 115.8	65": 1506.28 x 901.32 x 96.1 75": 1735.98 x 1034.52 x 103.75 86": 1991.57 x 1182.61 x 112.8
Wall Mounting (VESA) (mm)	4 holes (400 x 200mm) Screw M8 x 25mm	4 holes (400 x 200mm) Screw M8 x 25mm	4 holes (800 x 400mm) Screw M8 x25mm
Wall Mount	Included	Included	Included
Healthcare Features			
Germ-Resistant Screen	Yes	Yes	Yes
Flicker-Free	Yes	Yes	Yes
Low Blue-Light	Yes	Yes	Yes
Air Quality Sensor	Yes	No	No
Package / Accessory			
Remote Controller (with 2.4G dongle & Battery)	x1	x1	x1
Power Cord	By Region	By Region	By Region
Cable	VGA(3m) x1, HDMI(3m) x1, USB for touch (3m) x1	VGA(5m) x1, HDMI(1.5m) x1, USB for touch (3m) x1	VGA(1.5m) x1, HDMI(3m) x1, USB for touch (3m) x1, TYPE-C(1.5m) x1
Quick Start Guide	x1	x1	x1
User's Manual Electronic File	x1	x1	x1
Touch Pen	x2	x2	x2
Optional			
Optional Accessory	InstaShow, WiFi Dongle, OPS, Trolley, Camera	InstaShow, WiFi Dongle, OPS, Trolley, Camera	InstaShow, WiFi Dongle, OPS, Trolley, Camera

Accessories



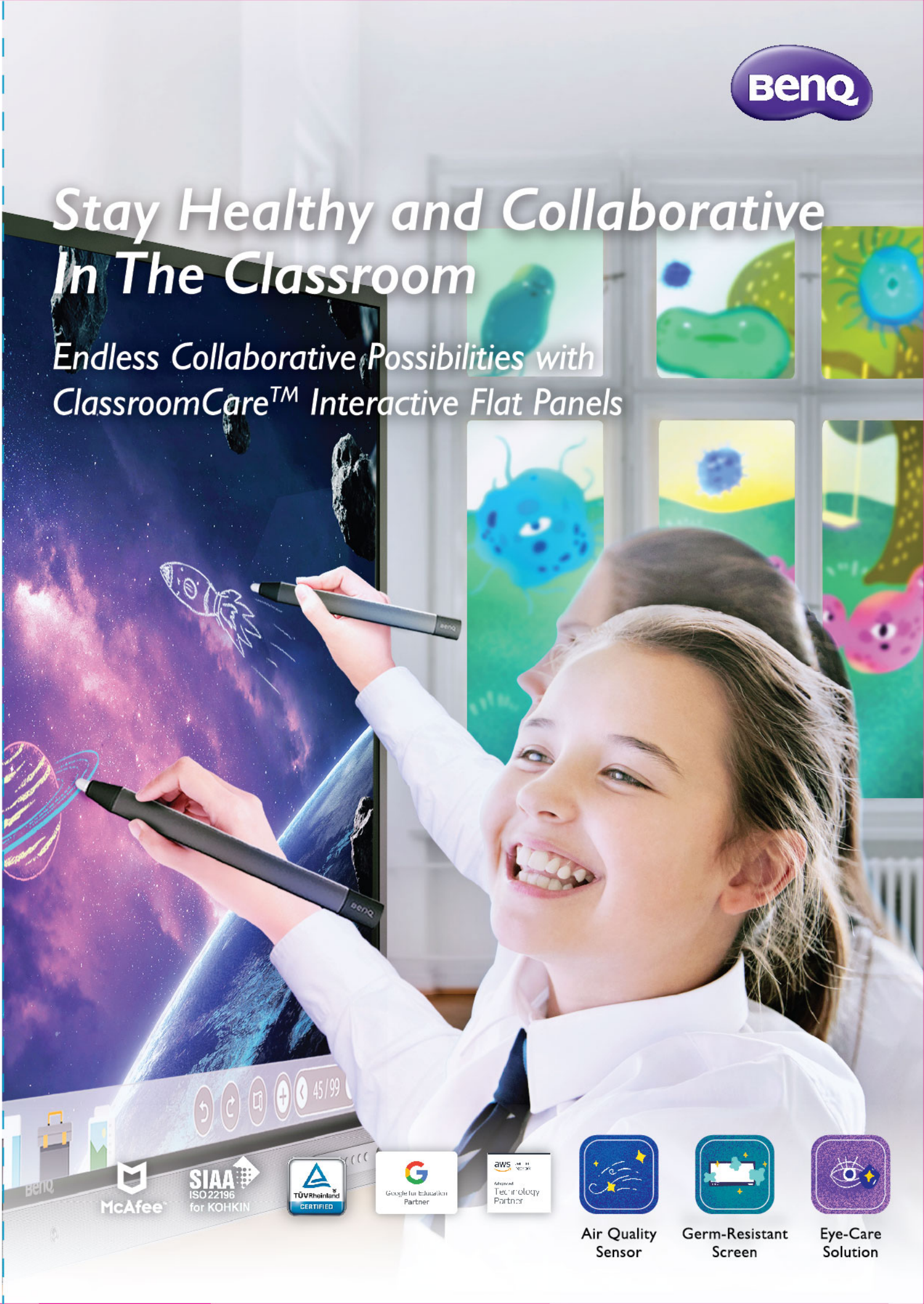
©2019 BenQ Asia Pacific Corp. Specifications may vary depending on the region. Please visit your local vendor for details. Actual product features and specifications are subject to change without notice. This material may include corporate names and the trademarks of third parties which are the property of those third parties.

Dealer's Stamp



Stay Healthy and Collaborative  
In The Classroom

Endless Collaborative Possibilities with  
ClassroomCare™ Interactive Flat Panels



Air Quality  
Sensor



Germ-Resistant  
Screen



Eye-Care  
Solution



# Invisible Enemies Surrounding the Classroom

Poor air quality, germs, and blue-light from LCD panels are the silent invaders of healthy classroom environments.



Did you know that poor air quality causes the following symptoms?



Cough



Eye irritation



Allergic reactions



Asthma



Headache

The truths are

100

Times Higher

Indoor levels of pollutants can be more than outdoor levels

High Levels of  
CO<sub>2</sub>

Results in drowsiness and poor student performance



Did you know that germs are commonly accumulated on the following items in schools?



Students' hands



Sink faucet handles



Keyboards



Bathroom door handles



Cafeteria tables and tray

The truths are

4.5

Sick Days

Are taken by K-12 students per year

Respiratory (colds and flu) and Gastrointestinal illness (norovirus and rotavirus)

Are commonly transmitted infections in schools

\$10.7 Billion

Losses

per year in the US due to student absenteeism



Did you know that blue light, flickering and glare emitted by screens can cause following symptoms?



Digital eye strain



Myopia

The truths are

7

hours

Of on-screen time per day are spent by teens for leisure and entertainment

1 Billion People

Have a vision impairment



What BenQ ClassroomCare™ Interactive Flat Panel Can Bring to Your Classrooms



Instant Environmental Detection



Eliminates 99% of Germs



Eye Health Protection

We Provide a High Concentrated and Healthy Learning Environment

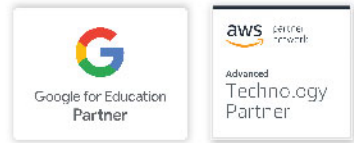
Sources:

U.S. Environmental Protection Agency, "Why Indoor Air Quality is Important to Schools"  
CO<sub>2</sub>Meter, "Indoor Air Quality in the Classroom"  
The Active Times, "These Are the Dirtiest Places in a School"  
Happi, "The Impact of Hand Hygiene On School Absenteeism"  
ABC News, "Teens spend more than 7 hours on screens for entertainment a day: Report"  
World Health Organization, "Blindness and vision impairment"



# The Digital Transformation For the Next Future Classroom

The Advanced ClassroomCare™ Interactive Flat Panel is the Perfect Balance of Collaboration and Health



## Collaboration



EZWrite Whiteboarding  
for in-class interactive lessons



Cloud Whiteboard  
for online collaborations across multi devices



Collaboration Tool  
for enhanced interaction and team building

## Distance Learning



EZWrite Live  
A web-based whiteboarding for distance and rural learning

## Wireless Presentation



InstaShare App  
for two-way wireless casting, mirroring and annotating content between the display and multi devices

## Cloud Management



Account Management System (AMS)  
to manage user accounts and teaching materials

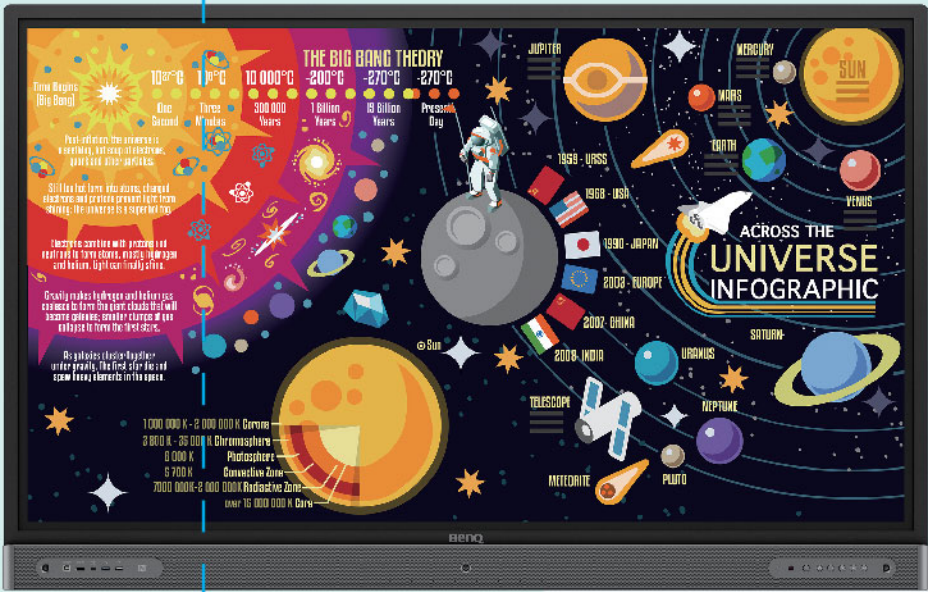


Device Management System (DMS)  
to remotely manage BenQ displays



X-Sign Broadcast  
to broadcast school news, video and audio files to BenQ displays

## What you can do with BenQ Interactive Flat Panel



## Health Care



Air Quality Sensor  
monitors CO<sub>2</sub>, PM2.5, PM10 levels plus temperature and humidity



Germ-Resistant Screen  
includes the TÜV and SIAA-certified nano-ionic silver coating to kill bacteria



Smart Eye-Care Solution  
protect your eyes from flicker-free, low blue light and anti-glare efficacy





# ClassroomCare™ Technologies: a Safeguard in Classrooms

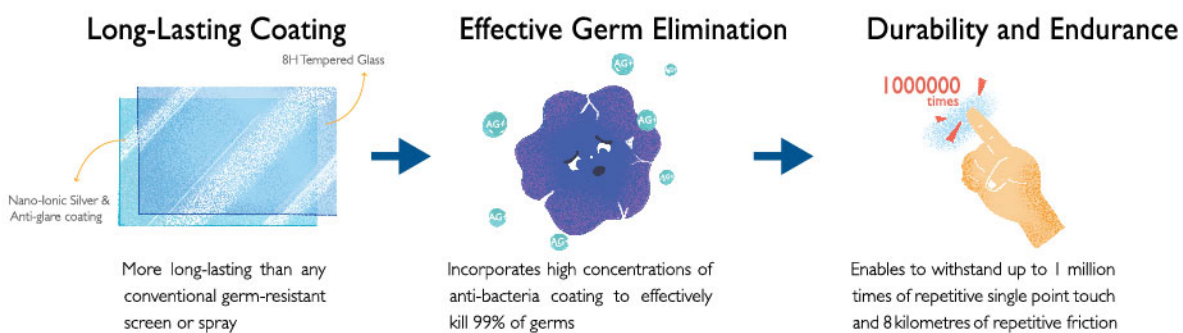
BenQ's ClassroomCare technologies cover everything from eye care and germ resistance to CO<sub>2</sub>, Particulate Matter, temperature and humidity monitoring, creating a safe and healthy space for students and teachers.

## Third Generation of Germ-Resistant Screen



Incorporates higher concentrations of nano-ionic silver compounds, and cured altogether with the anti-glare coating and tempered glass, giving the screen longer-lasting anti-bacteria and eye-care efficacy than any conventional germ-resistant screen or spray on the market. Most importantly, the screen is certified by TÜV and SIAA proving the efficacy of germ-resistance and non-toxicity.

### The benefits of 3rd generation of germ-resistant screen



## Air Quality Sensor

Air Quality Sensors help measure and display key environmental parameters in classrooms including temperature, humidity, PM 2.5, P10, CO<sub>2</sub> and Volatile Organic Compound (VOC) concentration levels, allowing teachers to intervene in good time.

New York



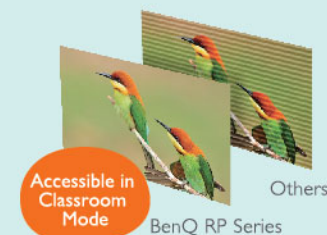
Real-Time Environmental Indicator

## Smart Eye-Care Solution

According to WHO statistics, at least 2.2 billion people worldwide have a vision impairment. BenQ Interactive Flat Panel is designed to protect teachers and students from eyestrain and eye fatigue caused by spending extended time in front of a visual display.

### Flicker-free screen

Although invisible to the naked eye, many screens still suffer from flickering, which eventually causes fatigue and irritated eyes. BenQ screens use TÜV-certified anti-flicker technology that makes them easier and more pleasant to view.



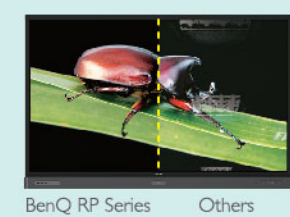
### Blue light filter

Low Blue Light technology deals with everyday problems of blue-light exposure and allows for healthier time spent in front of the display, effectively reducing any harm caused by blue spectrum light. The added PIR (Passive Infrared) Motion Sensor can detect people coming close to the screen and turn on the Low Blue Light function automatically.



### Anti-glare glass display

Light reflection on a screen is one of the biggest headaches for teachers. A reflective touchscreen combined with bright morning sun can pose significant difficulty for students when trying to read lesson content. BenQ's solution to this is anti-reflection glass, which makes pictures sharper and text more readable.







# EZWrite: Limitless Collaboration Opportunities

Combining Whiteboarding, Annotation, Collaboration and Distance Learning, EZWrite empowers teachers to provide interactive and collaborative lessons, fitting into a variety of classroom scenarios.

## Enhanced Interactive Learning

Combining the whiteboarding function, EZWrite is designed for interactive lessons, facilitating brainstorming, illustrating ideas, recording notes and collaboration between the teacher and students.



### Teaching With Ease



#### Tap & Create

Designed to activate the EZWrite whiteboard app with a simple tap of the NFC Pen



#### Handwriting Recognition

Recognises text, numbers and even drawings, and places them on the whiteboard in a clearly legible way.



#### Video Recording

Teachers can record all on-screen steps during their lectures and use the recorded videos for class preparation or review purposes



#### Data-to-Go

Class notes can be saved and shared directly via email, QRcode or a USB stick after the lesson is finished



#### Palm Eraser

Easily erase writing and drawing by using your hand

### Interactive Cooperation Tools for Fun Team Activities



#### Timer & Stopwatch

Perfect for timed team competitions, presentations and group activities



#### Calculator

Lets teachers perform mathematical calculations quickly



#### Geometry

Straighten and format roughly drawn shapes



#### Draw Lots

Randomly select students to answer questions or participate in activities



#### Team Post

Up to 3 teams of students can participate and post their answers simultaneously



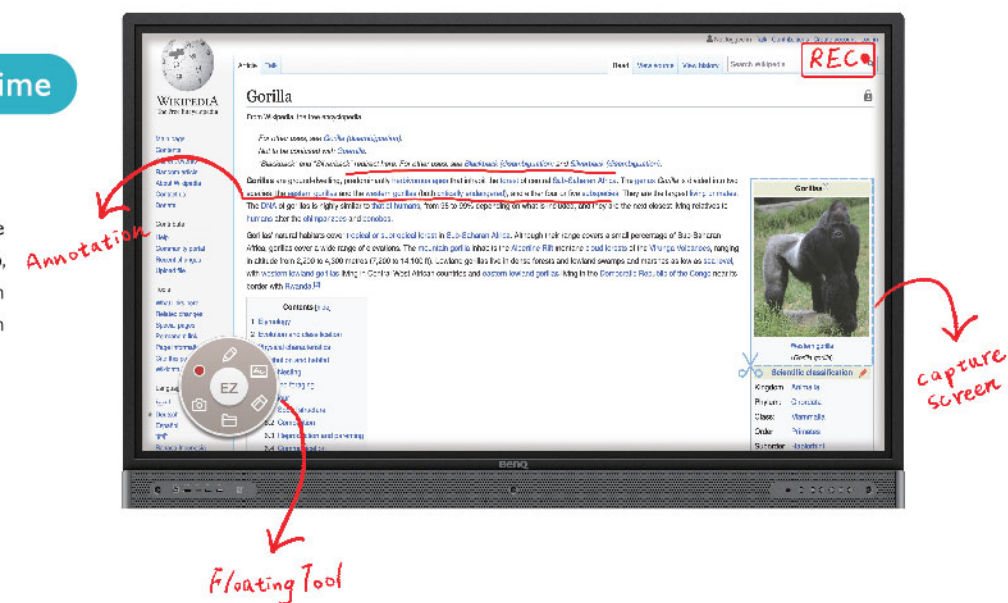
#### Score Board

A convenient and reliable tool for tallying game scores right on screen.

### Flexible Annotation, Anytime

#### Floating Tool

Utilise the Floating Tool to write and erase notes, record and capture on top of any app, image or video. Also compatible with Windows, Mac, or Chrome browsers when connecting with laptops or tablets.

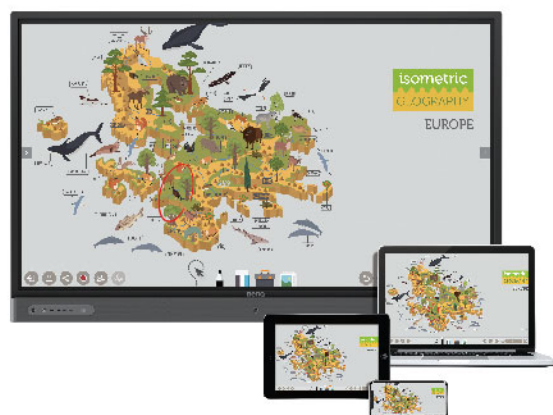






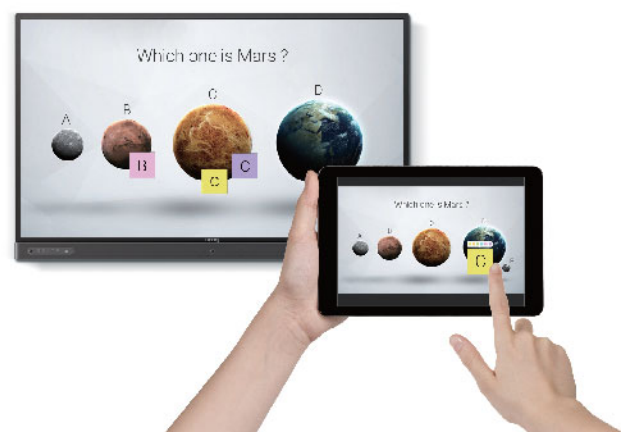
## Endless Collaborations On The Cloud

With built-in Cloud Whiteboard and Sticky Notes, teachers have the flexibility to take their lessons online, offering them new methods for capturing attention and collaborating with students.



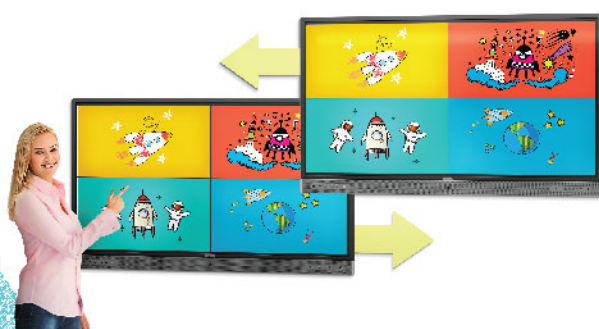
### Cloud Whiteboard

Teachers and students can enjoy enhanced interactivity by using EZWrite Cloud Whiteboard to collect, categorise, edit, and share notes between the display and mobile devices.



### Online Sticky Notes

In Cloud Whiteboard, teachers and students can discuss and brainstorm any topic using Sticky Notes, opening up endless possibilities for engagement and creativity.



### Board to Board

Create a shared cloud whiteboard on different BenQ IFPs simultaneously for group discussions.

## Make Your Remote Learning Engaging and Collaborative

EZWrite Live is a web-based whiteboarding and video conferencing platform designed for remote learning. Compatible with Firefox, Chrome, and Safari browsers, it allows teachers to offer online lessons to students who can either participate in the classroom or from home.

### Create Interactive and Boundless Lessons



Access from anywhere through web browser across different OS platform and devices.



Real-time annotation enables teachers and students to interact simultaneously.



One-tap video recording allows students to focus on the lecture without distraction on note-taking.



Teachers can easily take control of the class by turning on/off students' editing-access of the cloud whiteboard.



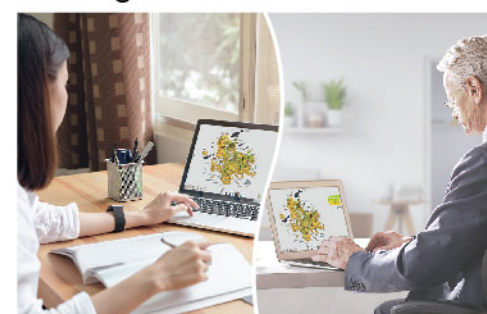
Teachers and students can use their existing whiteboard canvas as they did in their schools.



Built-in education focused template are designed for better communication.

## The Perfect Companion for Distance Learning

### Learning from Home



### Distance Education







# Real Pen Writing Experience With No Gap

Featuring advanced touch technologies, Zero Bonding and Fine IR Plus, BenQ RP Series provides real-time and accurate writing and drawing feedback just like natural writing. Express your ideas easily, quickly and consistently.

## Zero Bonding Technology

Zero Bonding Technology ensures a natural and accurate writing and drawing experience by reducing the gap between the touch point and the point displayed on screen.



## Boost Creative Education

Thanks to Zero Bonding Technology and Fine IR Plus technologies, it facilitates users to simultaneously write in different colours and paint at the stroke of a brush, increasing engagement with students.



Dual Pens

Ideal for group discussions or answering questions during class lessons, Dual Pen allows users to write simultaneously in different colours.



Brush Mode

Works with any brush, making painting and drawing limitless. With built-in Brush Mode, it is ideal for inspired creativity in art classes.

# Wirelessly Share Your Thoughts In One Click With InstaShare

Designed to enhance Project Based Learning, InstaShare is a revolutionary screen sharing technology that provides the capability for wireless presentations and effortless collaboration.

## Two-Way Mirroring and Touch Back Across Multiple Platforms

InstaShare can be installed across multiple platforms, including iOS, Android, Chrome and Windows OS, offering convenience to share content and provide instant feedback from laptops, smartphones and tablets to the Interactive Flat Panel.



## Nine Split Screens For Synchronized Discussions

Accommodating nine devices, InstaShare allows up to nine devices at once with synchronized discussions.

## In-App Sharing Permission Control

Unpermitted content casting can interrupt lessons and reduce learning quality. In-app screen sharing permission lets teachers control the permission of content sharing from students' devices.







# Hassle-free Cloud Display Management

IT departments of large schools and local education authorities are facing some major challenges: how can they manage all the screens at all their locations, how can they synchronise documents so that they're easily accessible for all staff and how can school messages be delivered efficiently to students?

## Manage Displays On The Cloud With Device Management Solution



### Device Info and Management

Remotely control your displays with DMS Cloud via Internet, lowering TCO and energy consumption for your operation.



### Apps Management

DMS Cloud is designed to save you the hassles of repetitive manual installation work.



### OTA (Over-the-Air) Update

Upgrade the latest BenQ firmware for your displays through our OTA Update support and keep them running smoothly at all times.

## Connect Your Account and Teaching Materials with Account Management System

### For Teachers

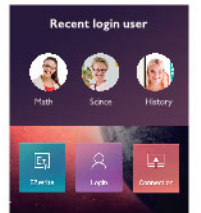
#### Access Your Class Material Automatically in Different Classrooms

BenQ AMS can connect with Google Drive, OneDrive, Dropbox and Network Folder, allowing teachers to import class materials to EZWrite or open supporting files through AMS in any classroom without having to enter account information again.



#### Smart Login to Your Personalised Setting Anywhere In the Campus

Designed to simplify the login process, teachers can either scan a QR code to log in to their personalised IFP environment using a smartphone or tablet (for both IFP and Smart Projector), or tap the NFC sensor to activate (IFP only) – just like your PC.



### For IT Staff

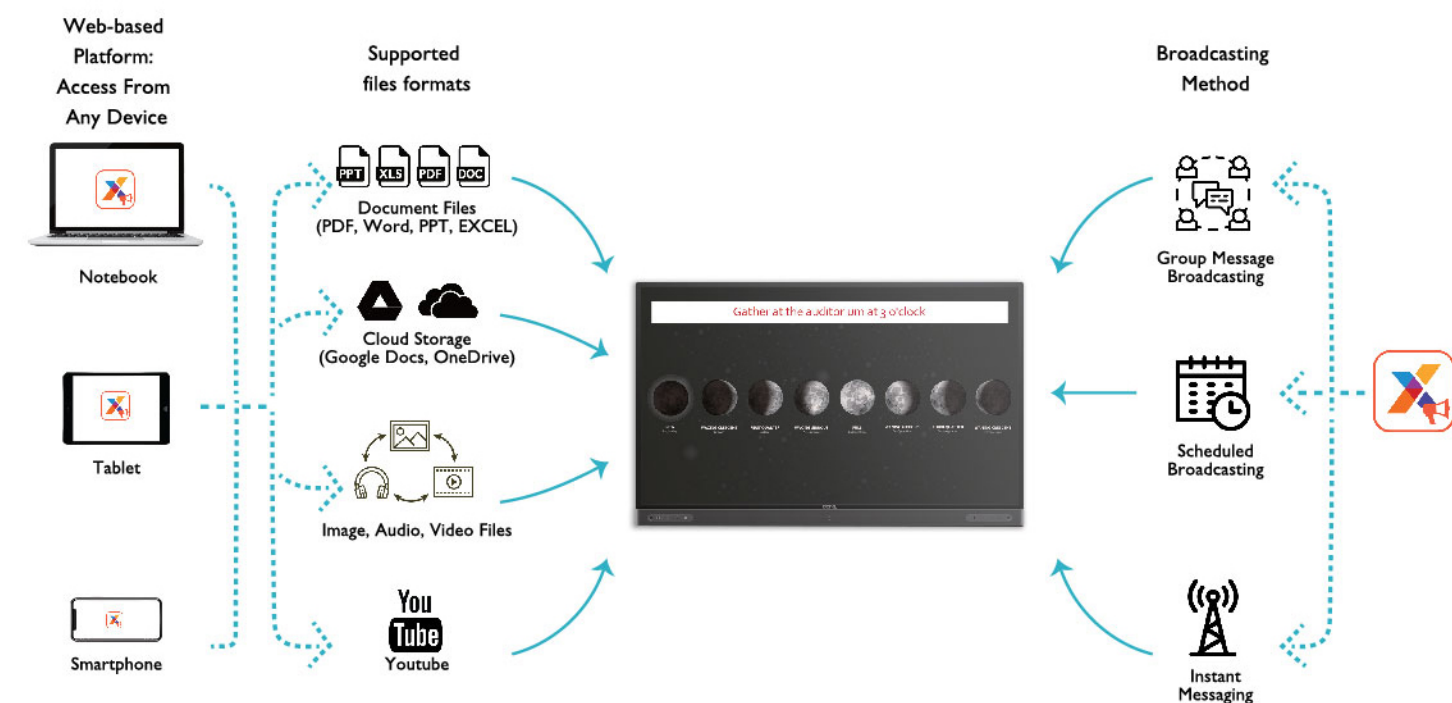
#### Efficient Account Management

Traditionally, it is extremely time consuming to manage large amounts of user accounts for corporate IT managers. AMS provides a clear and intuitive user interface for IT managers to remotely manage multiple user accounts.



## Empower Your Broadcasting System With X-Sign Broadcast

Designed to simplify the broadcasting process across different classrooms, X-Sign Broadcast can be scheduled to broadcast school messages, classroom material, video and audio files to all or dedicated Interactive Flat Panel using any laptop, tablet or smartphone.





# Thoughtful Design that Helps Foster the Flow in the Classroom

We have designed our Interactive Flat Panel to better facilitate the teaching process, ensuring that teachers can deliver lessons throughout their class without interruption.

**Air Quality Information**  
monitors CO2, PM2.5 and PM 10 levels plus temperature and humidity

**Quick shortcuts**  
to start EZWrite Whiteboard, Wireless Projection via InstaShare and manage files on Account Management System (AMS)

**Slot-In-PC**  
adds the ability to run Windows OS on the panel

**PIR Motion sensor**  
(Short Range) for Eye-Care activation

**Multiple Connection Ports**  
(HDMI, Type-C, USB 3.0, USB 2.0)

**NFC Sensor**  
to instantly activate EZWrite whiteboard and personal accounts with the tap of the NFC Pen

**PIR Motion Sensor (Long Range)**  
for auto screen wakeup

**Speaker Subwoofers and Equalizer**  
offers the best sound settings to suit the size of classrooms and lessons

**8H Tempered Glass with Germ-Resistant Coating**

for extreme protection



**Sync with the files**  
stored on your own Google Drive, Dropbox, OneDrive and local network drive



**Smart Remote Control**  
presenter (digital pointer, spotlight) and voice assistant functions included



**Function Buttons**

**PIR Motion sensor(Short Range)**  
for Eye-Care activation





“ InstaShare is incredibly good that we can collaborate within a classroom. And X-Sign Broadcast allows us to do is that we can take that collaboration from students and teachers all the way across multiple classes.”

*Rob Whel, Head of Year 7*

## Coomera Anglican College, Queensland, Australia

### Q Issue

Coomera Anglican College, a tech-savvy school in Queensland, Australia, was looking to improve communications both inside and outside the classroom. The school wanted a system that could better engage students' attention and enhance student interactions while also facilitating more robust messaging and content sharing across the campus.

### 💡 Solution

BenQ's smart broadcasting system. X-Sign Broadcast is BenQ's exclusive wireless broadcasting system that lets school staff push alerts, messages, and other announcements during class. Boasting a powerful combination of BenQ Interactive Flat Panel RP7501K, it allows for seamless collaboration between the display and mobile devices, making it easier than ever for teachers to capture and maintain students' attention in today's technology-driven classrooms.

### 📈 Result

X-Sign Broadcast's integration into Coomera Anglican College went smoothly and the benefits have been massive. Class time has become more fun and interactive, and teachers, students, and staff are better able to communicate both during and outside of class. Furthermore, the number of tech support tickets related to classroom displays has dropped significantly since the introduction of X-Sign Broadcast.

“ BenQ Interactive Flat Panel had a lot of features we wanted. Actually more than we wanted and it included. And we had good demonstrations from BenQ to make sure that we all know how to use.”

*Emin Huseynov, Principal*

## Horizon Japan International School, Yokohama, Japan

### Q Issue

Located in Yokohama, Horizon Japan International School has been providing education to the city's international and local children since 2003. Recently the school moved to a newly constructed campus near Yokohama Station. The construction of the new campus also introduced an opportunity to replace outdated teaching technologies with newer, more interactive and collaborative solutions.

### 💡 Solution

To achieve an interactive and collaborative classroom, Horizon Japan International School selected RP8601K Interactive Flat Panel and applied EZWrite 5 whiteboard solutions, making teachers and students to write, annotate and collaborate on the screen and through their mobile devices.

Health matters in Horizon Japan International School. BenQ's Smart Eye-Care Technology eliminates flicker and reduces glare and blue light emissions to protect students' still-developing eyes. Plus, the RP8601K's germ-resistant screen lets students interact with the board freely while inhibiting the spread of germs in the classroom.

### 📈 Result

Classes at Horizon Japan International School are now more fun and productive than ever, and BenQ has played a central role in the new campus's success. Students are impressed with the clarity of the displays, as well as with the fact that you can write on them without a connected laptop. Meanwhile, teachers and staff have found that the displays have all the features they wanted and more, and have also been very satisfied with BenQ's support both before and after the school acquired the boards.