

**Unilumin**

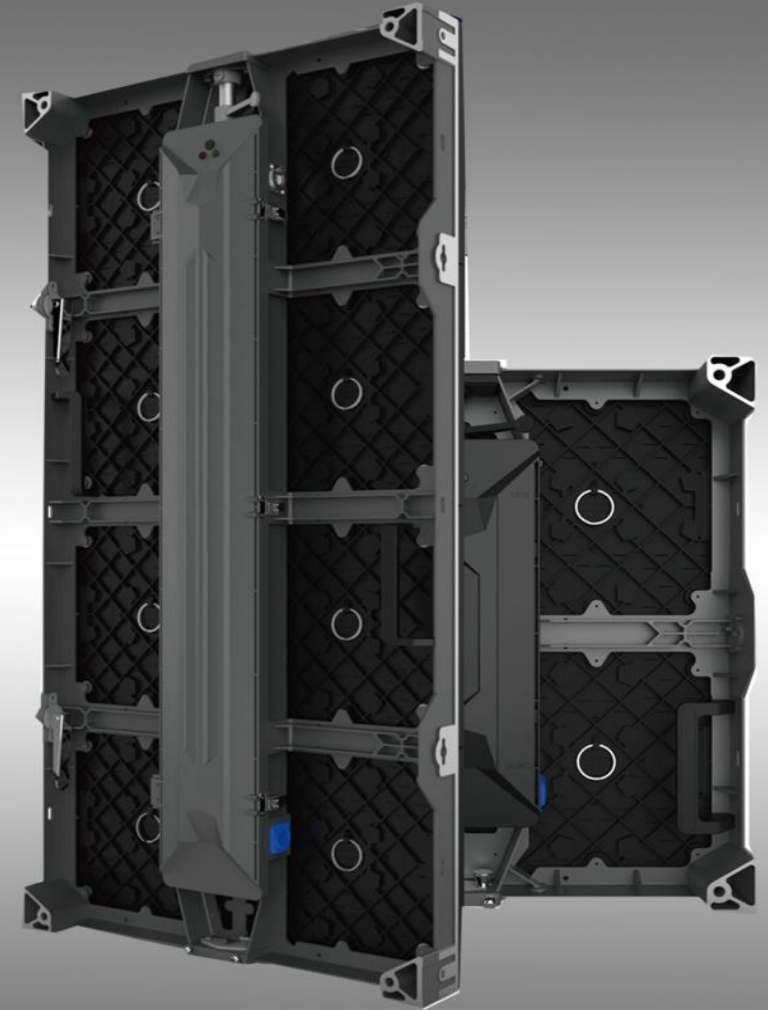


# Kslim2.5

Entry level product of P2.5 pixel pitch

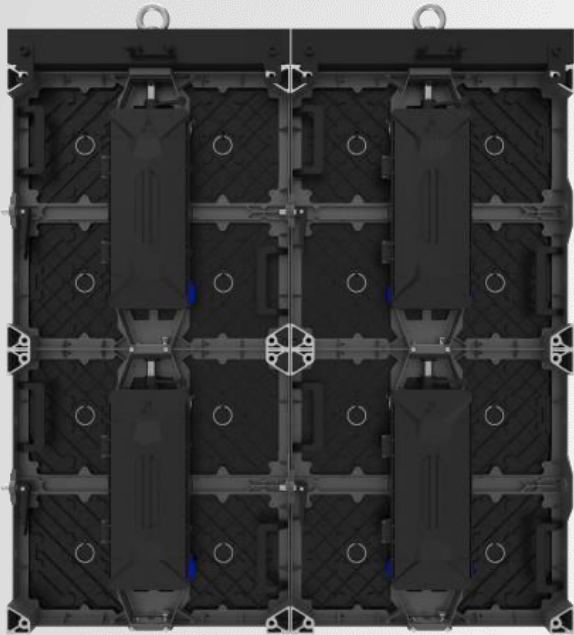
# Products Overview

- Ultra HD LED Display
- Full Front Serviced
- Two Cabinets Size Options(500x500mm/ 500x1000mm)
- Front Installation
- Unified Modules(250x250mm)
- Aluminum Cabinet





# Typical and special solutions, Widely application



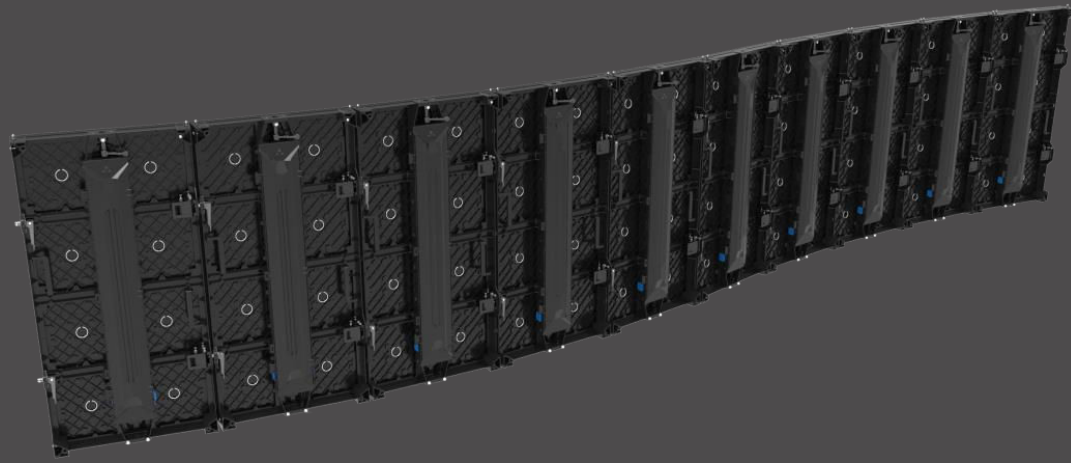
## Hanging

Lighter weight and better thickness control of our cabinet with fast locks makes hanging more efficiently

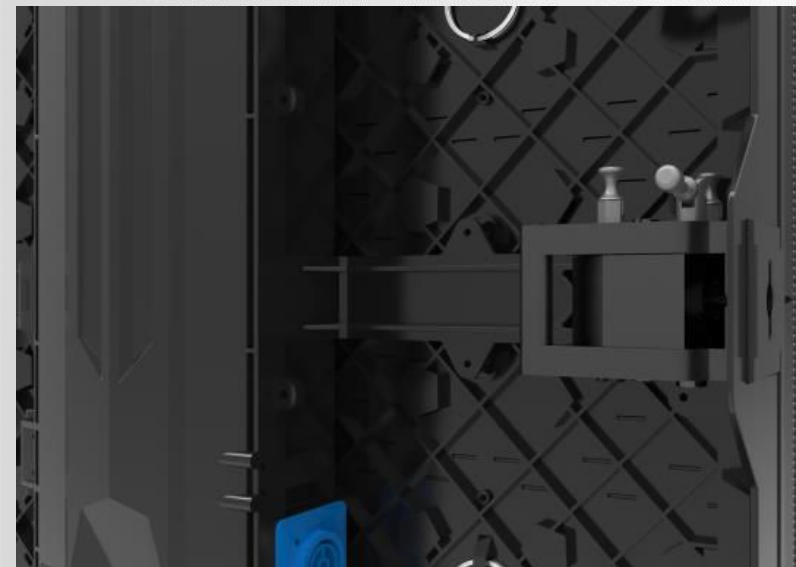
## Stacking

Rigid and strong stacking frame, ensure the stability of product installation





-5° - +10° Curve Optional



1. Curve cabinet unique design .
2. Testing the product of mosaic technology,
3. Display extraordinary LED effect and visual perception.





Concave: Max 10°



Convex: Max 5°





Corner-customized solution

Perfect solution to the column of LED display, multi-dimension exhibition takes more attention and benefit of the advertisement

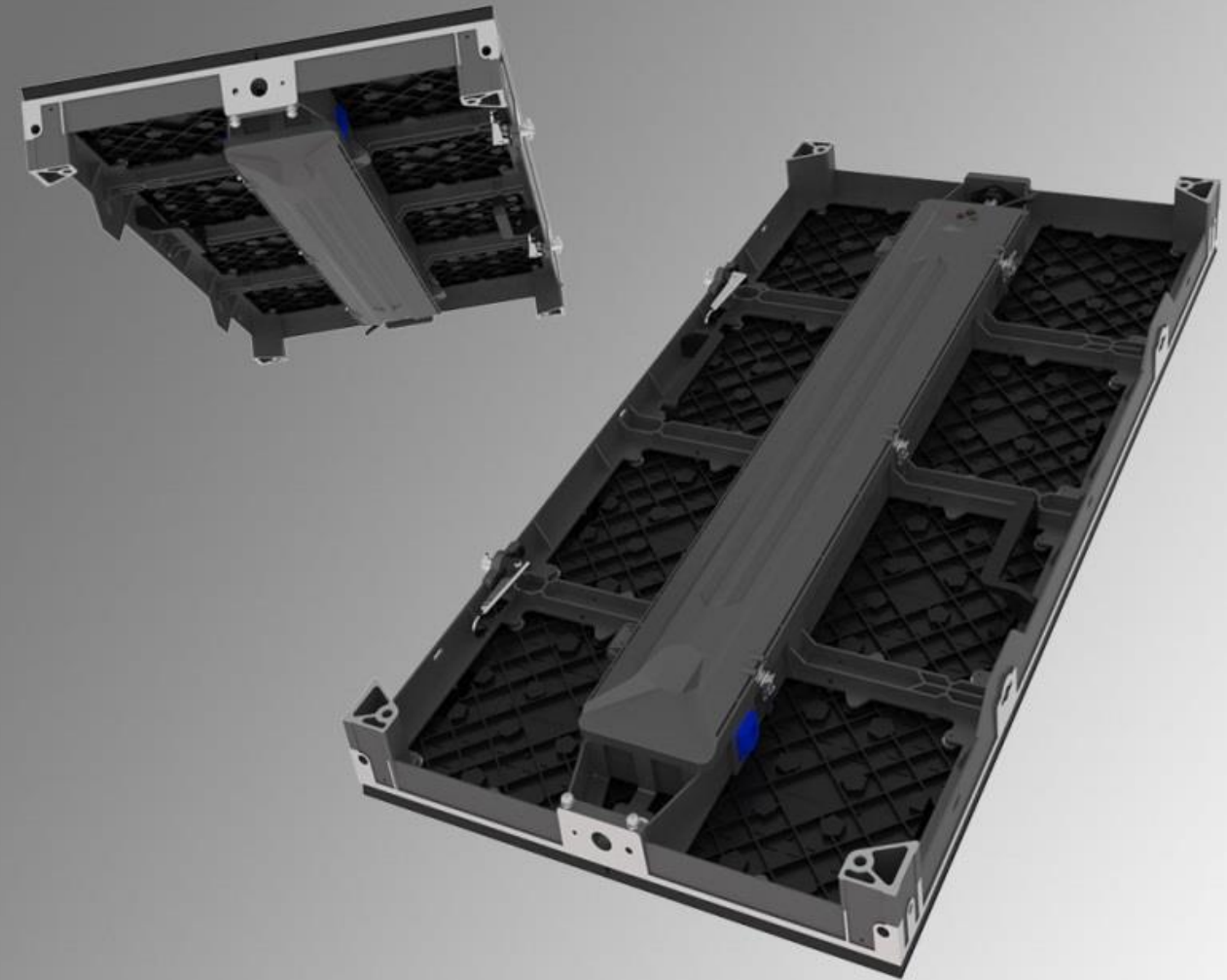


## Appearance

### Simple Appearance, Delicate and Portable

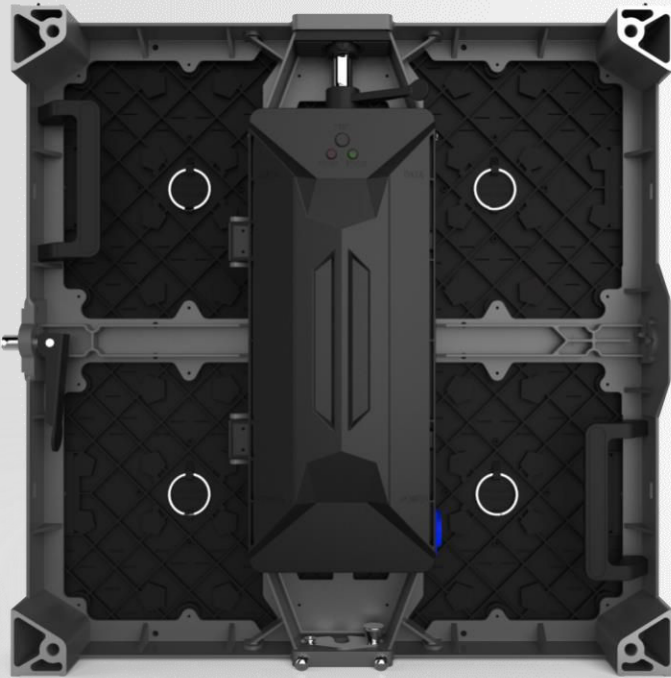
Simple industrial design, free, noble, solemn, calm and stable, these characteristics gang together, in leading the fashion at the same time display the deep, mysterious, hidden strength side.

Simple and symmetrical shape design highlights the solemn, interpretation the beauty of the Kslim2.5 series.





# Die-casting Aluminum, High Precision, High Strength

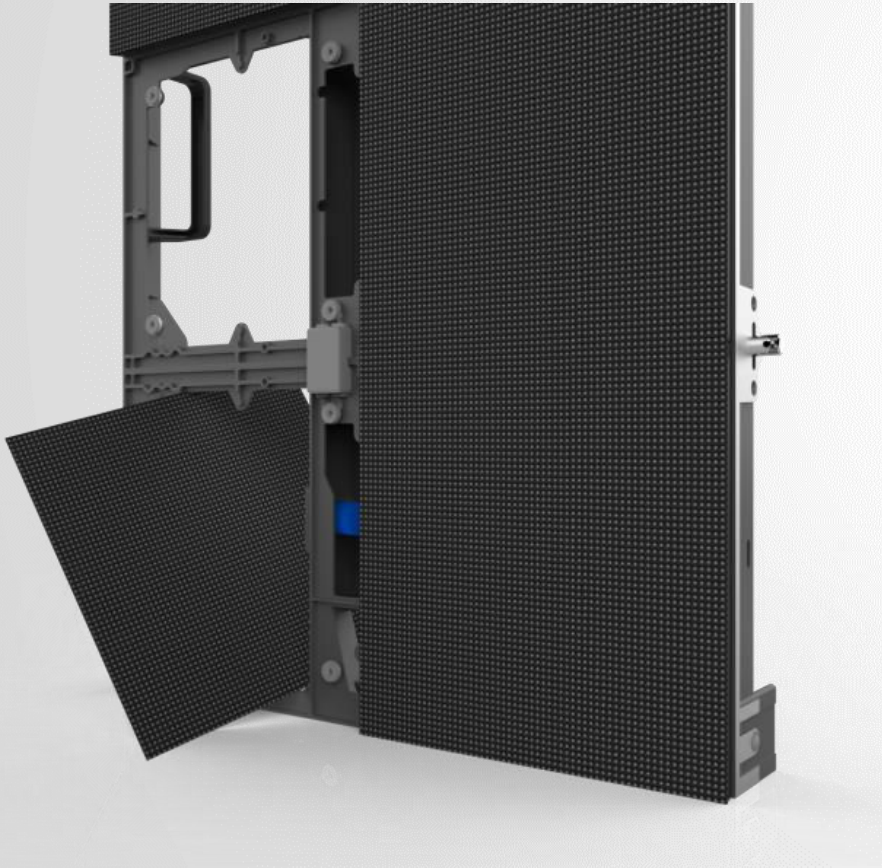


Testing by the authoritative testing institutions, die-casting aluminum material cabinets has high strength, tensile test can reached 15.69KN.

Testing by high and low temperature cold and hot cycle test, die-cast aluminum materials is more stable and difficult to deformation than magnesium alloy materials, so that the high precision of the cabinets can be guaranteed.

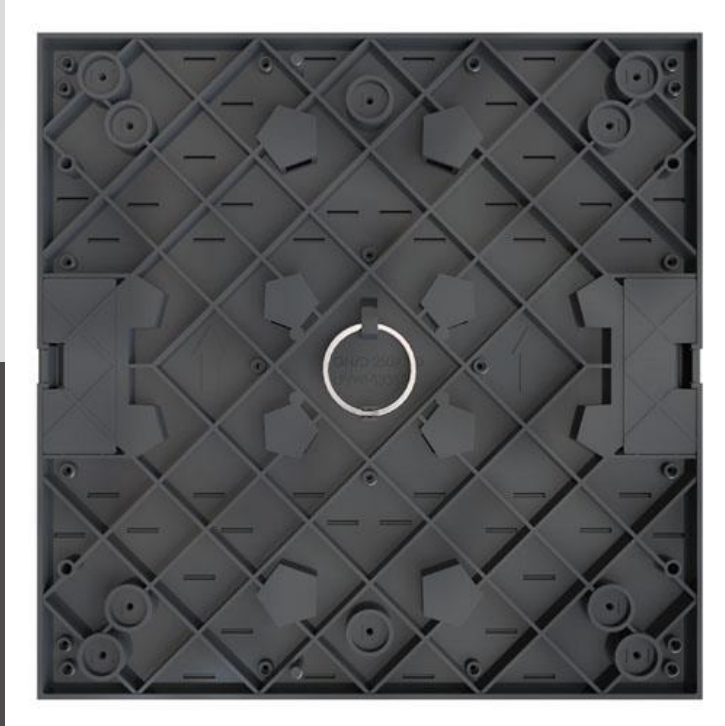


## Full front serviced



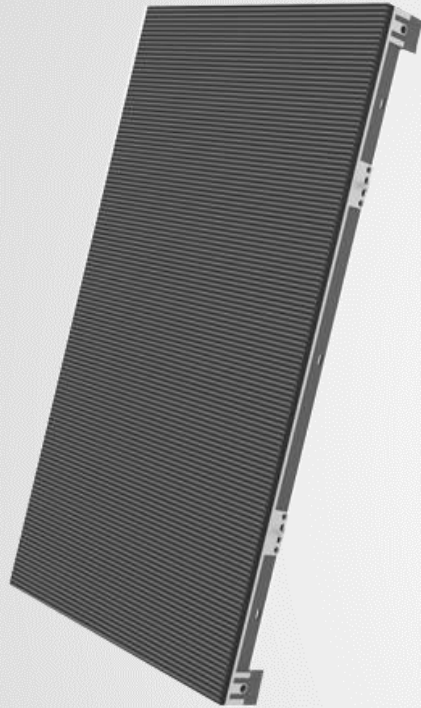
Front maintenance, no maintenance path needed each module is equipped with magnet cylinders, which connect the module onto the panel structure.

## Unified Modules Design Platform



Kslim2.5 series with module size of 250x250mm provides magnet module assembling method for front and rear access.





## Vertical extremely wide viewing angle

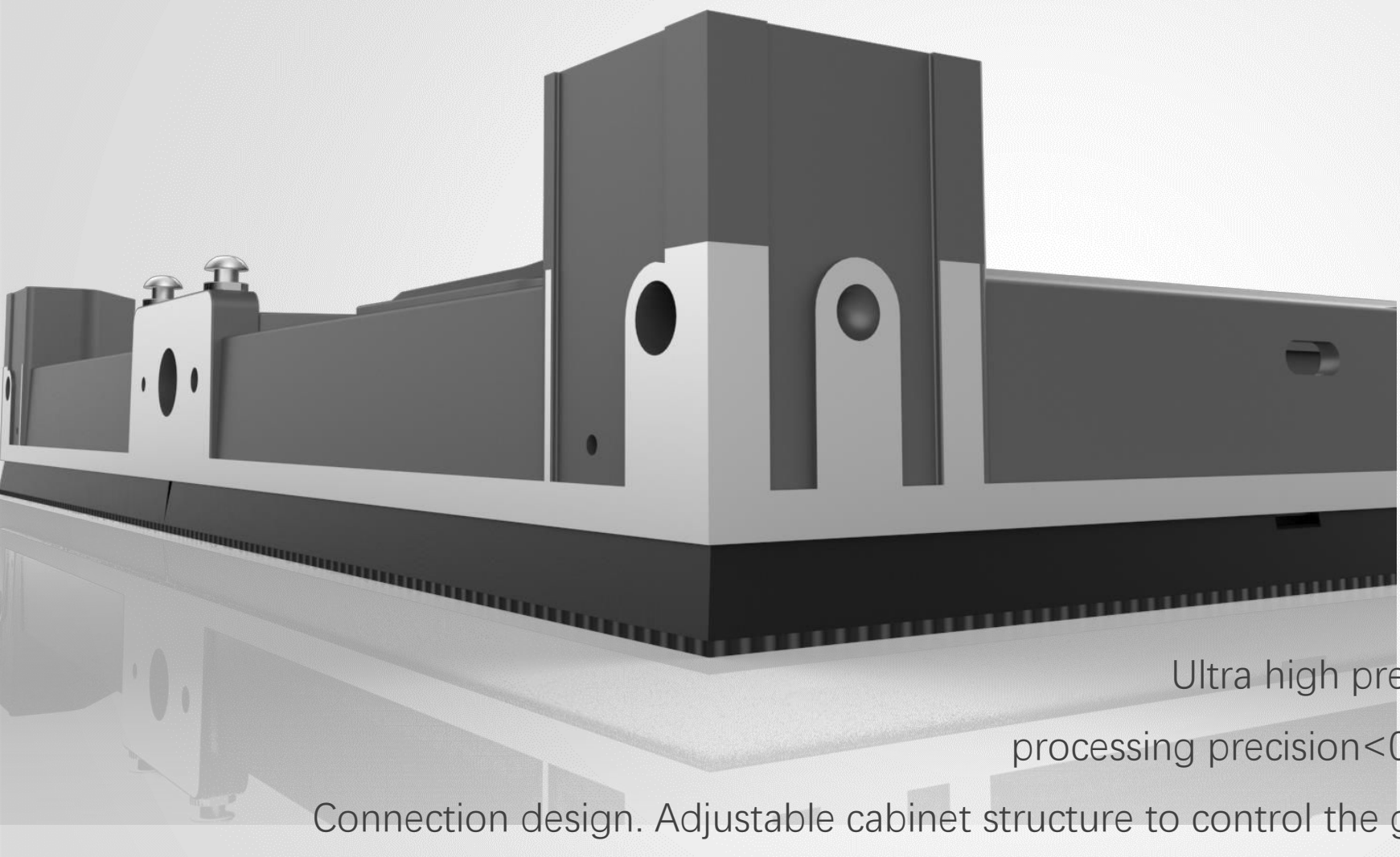
Small pitch outdoor product will bring you exquisite display effect, and high brightness will ensure the visibility. The content will embrace you with vivid color and great visual impact.



## Lighter, thinner, more convenient

The thickness of our product reduced by 96mm comparing with traditional cabinet is reduced, saving more transport and labor cost to be saved.





## High quality cabinet

Ultra high precision CNC workmanship  
processing precision <math><0.1\text{mm}</math>. Special seamless  
Connection design. Adjustable cabinet structure to control the gap within  $\pm 0.03\text{mm}$

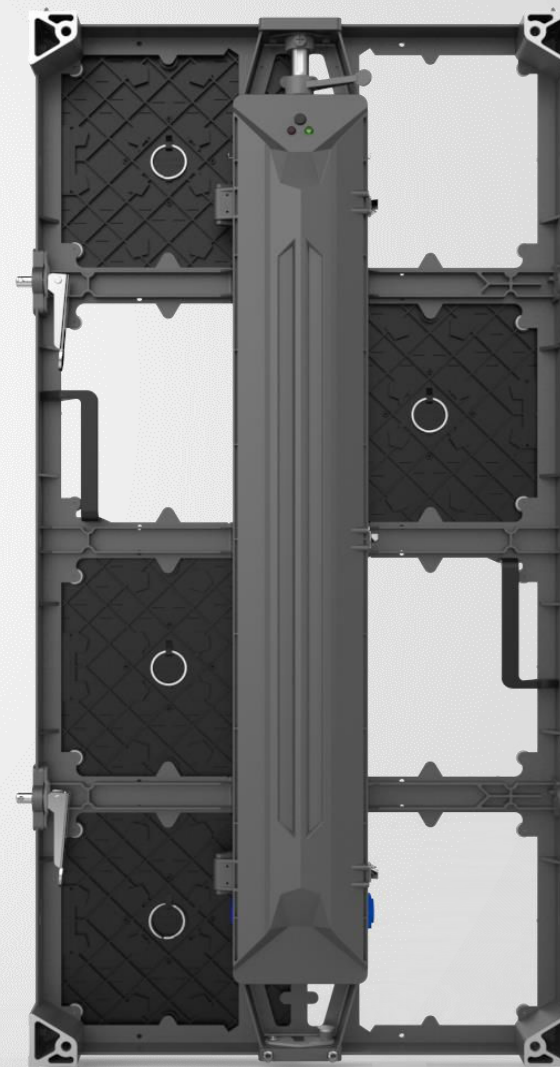


## Front maintenance, no maintenance path needed

Each module is equipped with magnet cylinder, which connects the module onto the panel structure.

## Smarter, high efficiency on maintenance.

This newest generation screen adopts full front Service, a breakthrough for easy maintenance without tools, which makes repairing and replacement more efficient. With a simple press on the module smart structure, users can replace the module within 10 sec, supply power and take out the receiving card from the front too.





# Specifications

<b>Kslim2.5 Series</b>	
LED Type	SMD2121
Pixel Pitch	2.5mm
Panel Dimensions	500x500x83/500x1000x83 mm
Pixel Matrix Per Panel	200×200 / 200×400 Dots
Module Size	250x250mm
Weight Per Panel	7.5/13.5kg
Refresh Rate	1920-3840Hz
Driving Type	1/25
Brightness	800nits
Max Power	528W/m <sup>2</sup>
IP Rating	176W/m <sup>2</sup>
Typical Value	100000Hrs
Installation Type	Fix